

Project Location	First Coast High School, USA	Completion Date	June 2004
Project Details	Baseball Field for a High School		



Imagine a sportsfield or racetrack that remains in play no matter how much rain has fallen. The proper drainage of sportsfields can ensure that minimal days are lost due to wet weather.

First Coast High School, located in Jacksonville, Florida, is a school that serves grades 9-12 in the Duval County Public Schools district. A practice pitch adjacent to the baseball field was persistently damp. The use of Atlantis[®] Drainage Cell underneath the turf assisted the drainage of water ponding on the surface.

Excellent growing conditions are achieved by draining only excess water, leaving high moisture content. This content produces optimal growing conditions for vegetation above the Atlantis[®] Drainage Cell. The excess water is directed to a vegetated area for infiltration using a perforated pipe.

The unique design of the Atlantis Drainage System creates a constant sub-surface aerobic water table in suspension known as a perched water table. The use of Atlantis[®] Drainage Cell facilitates quicker wear recovery and maintains healthier turf all year by combining a high-growth root zone environment with rapid drainage rates and increased moisture retention.



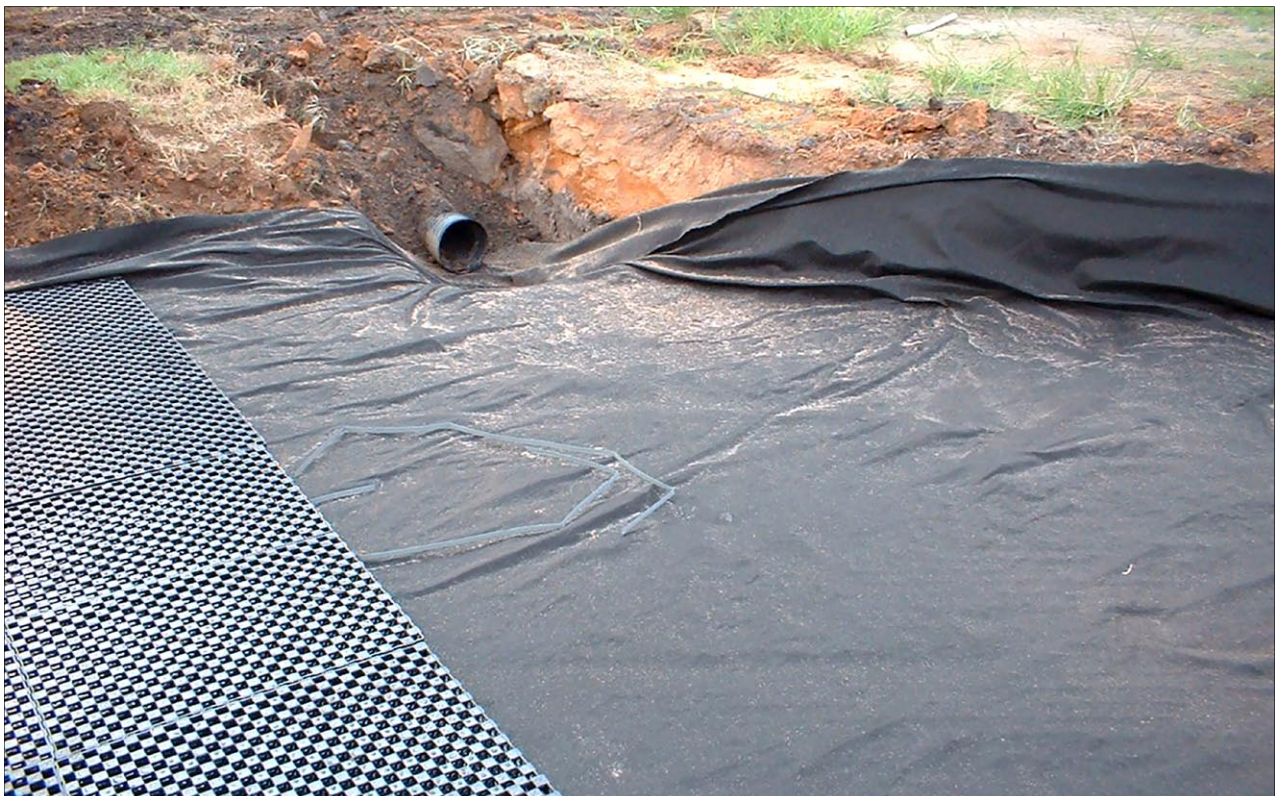
The Atlantis[®] Drainage Cells ready to be installed.



Excavation preparation for the Atlantis[®] Drainage Cells.



Installing the Atlantis[®] Drainage Cells on top of the Geotextile.



Outlet to infiltration zone.



Distributor: ACF Environmental

Note: Atlantis® products are manufactured from high quality recycled materials, carefully selected and under strict quality control procedures. The strength could vary slightly due to raw material, country of manufacture, manufacturing process and external conditions.

Safety Factors: Engineers, designers and geotechnical engineers should design and calculate safety factors to a serviceable limited state to suit specific project. In case of doubt, consult your nearest distributor or Atlantis representative.

Disclaimer: All information provided in this publication is correct to the best knowledge of the company and is given out in good faith. This information is intended only as a general guide, no responsibility can be accepted for any errors, omissions or incorrect assumption. As each project is unique, and as Rebirth Pty Ltd, Atlantis Water Management, Atlantis Corporation Pty Ltd and its distributors and agents world wide have no direct control over the methods employed by the user in specifying, installing or supervising of its products hence no responsibility is

accepted by Rebirth Pty Ltd, Atlantis Water Management, Atlantis Corporation Pty Ltd and its distributors and agents world wide. Users should satisfy themselves as to the suitability of the product for their purpose.

All product designs, and specification are subject to change without further notice. All Atlantis® products are tested in approved NATA laboratories, and safe allowed tolerances should be practised in the actual field, to compensate for any unforeseen situations, on site and on products. All material contained within this brochure is subject to copyright, and belongs to Rebirth Pty Ltd Australia. No part of this brochure may be reproduced or transmitted in any form or by any means: electronic, mechanical, photocopying, recording or otherwise, without prior written permission of Rebirth Pty Ltd, Australia, Atlantis Water Management, Atlantis Corporation Pty Ltd. Copyright © 2009 by Rebirth Pty Ltd, Australia, Atlantis Water Management, Atlantis Corporation Pty Ltd, Australia.

Atlantis Water Management

HEAD OFFICE:

3/19-21 Gibbes Street, Chatswood, NSW 2067, Australia

PHONE: + 612 9417 8344 • FAX: + 612 9417 8311

AUSTRALIA WIDE PHONE NO.: 1300 38 28 38

EMAIL: info@atlantiscorp.com.au • WEB: www.atlantiscorp.com.au

Atlantis Water Management Victoria

30 Venture Drive, Sunshine, VIC 3020 Australia

PHONE: 1300 38 28 38

Agent: